

in Eb

Mister Magic

Grover Washington, Jr.

Intro

Am⁷

D⁷

Am⁷

D⁷

Last time only

Musical notation for the Intro section, featuring a treble clef, 4/4 time signature, and a key signature of one flat (Eb). The notation includes a 'Key' label and a 'Last time only' instruction. The melody consists of eighth notes and quarter notes, with a final measure ending in a double bar line.

A

Am⁷

D⁷

G⁷_{sus}

Am⁷

Musical notation for Section A, featuring a treble clef, 4/4 time signature, and a key signature of one flat (Eb). The notation includes a '3' (triple) marking over a group of notes. The melody consists of eighth and quarter notes.

Gm⁷

C⁷

FΔ⁷

E⁷

Am⁷

D⁷

Musical notation for Section B, featuring a treble clef, 4/4 time signature, and a key signature of one flat (Eb). The notation includes a '3' (triple) marking over a group of notes. The melody consists of eighth and quarter notes.

B

CΔ⁷

FΔ⁷

CΔ⁷

FΔ⁷

Musical notation for Section B, featuring a treble clef, 4/4 time signature, and a key signature of one flat (Eb). The notation includes a '3' (triple) marking over a group of notes. The melody consists of eighth and quarter notes.

1.

CΔ⁷

Eaug⁷

Musical notation for the first ending, featuring a treble clef, 4/4 time signature, and a key signature of one flat (Eb). The notation includes a '3' (triple) marking over a group of notes. The melody consists of eighth and quarter notes.

Am⁷

D⁷

Am⁷

D⁷

Musical notation for the first ending, featuring a treble clef, 4/4 time signature, and a key signature of one flat (Eb). The notation includes a '3' (triple) marking over a group of notes. The melody consists of eighth and quarter notes.

2.

CΔ⁷

Eaug⁷

Musical notation for the second ending, featuring a treble clef, 4/4 time signature, and a key signature of one flat (Eb). The notation includes a '3' (triple) marking over a group of notes. The melody consists of eighth and quarter notes.

Am⁷

D⁷

Am⁷

D⁷

Musical notation for the second ending, featuring a treble clef, 4/4 time signature, and a key signature of one flat (Eb). The notation includes a '3' (triple) marking over a group of notes. The melody consists of eighth and quarter notes.

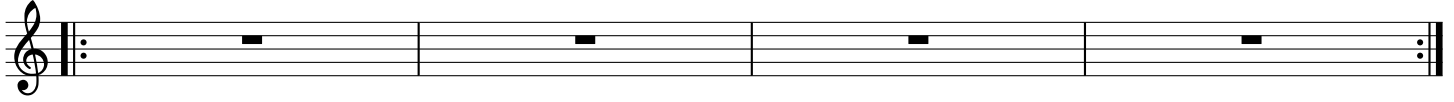
Solo x times Repeat

Am⁷

D⁷

Am⁷

D⁷



On Cue

Eaug⁷



Am⁷

D⁷

Am⁷

D⁷

